





M-2



K-2



M-2A



K-2A



MB-2



M-1



N-464



N-464A



N-465





N-465A



N-465B



N-465



N-465B



N-465A



N-466



N-466A



K-466



N-467B

N-467A

N-467



B-467

The image displays three multi-strand bracelets, each featuring a different combination of gemstones and pearls. The top bracelet, labeled B-467, is composed of numerous thin, parallel metal strands and is adorned with light-colored, teardrop-shaped pearls and small, clear, round-cut diamonds. The middle bracelet, labeled B-467A, features a mix of dark, teardrop-shaped stones, light-colored pearls, and small clear diamonds. The bottom bracelet, labeled B-467B, is decorated with dark, teardrop-shaped stones, light-colored pearls, and small clear diamonds, with a few yellowish-gold teardrop-shaped stones interspersed among the dark ones.

B-467A

B-467B



K-467A



K-467



K-467B





N-468A



K-468

N-468



K-469C



Z-469C



Z-470



Z-470B



Z-470A



Z-471A



Z-471B



Z-471



Z-472



Z-472A



K-472



Z-473B



Z-473A



Z-473









B-39

K-39

N-39



















B-236

K-236

N-236



B-237

N-237





N-243



K-274

N-274



K-285

N-285





N-287



K-287





B-317

K-317

N-317



B-317

K-317

N-317

K-329

K-329A

N-329A

N-329





K-331



N-331



P-331



P-347

K-347A

N-347A



B-347

P-347

K-347B

N-347B





K-356

N-356



K-356

N-356



B-358

N-358







B-375

K-375

N-375



N-376



N-392





K-392

N-392



K-393



N-393



N-393A



K-399

N-399





N-401A



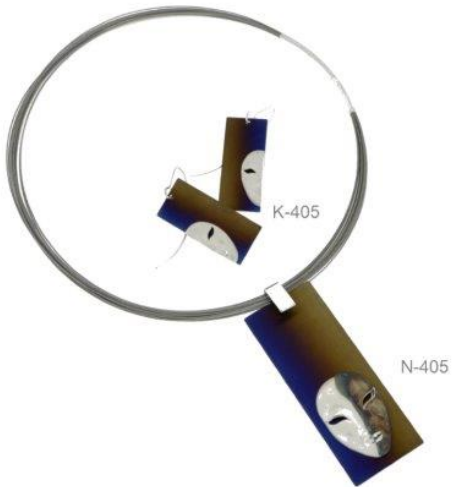
N-401AA



N-401 S



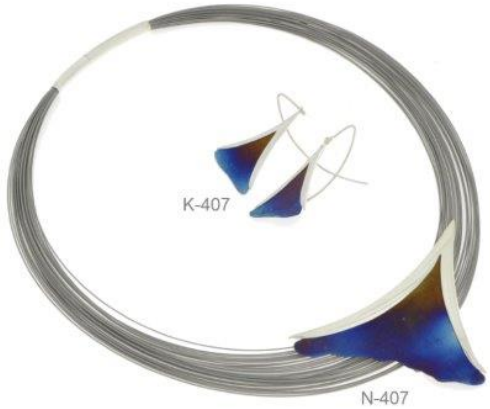




K-405

N-405





K-407

N-407



K-410

N-410



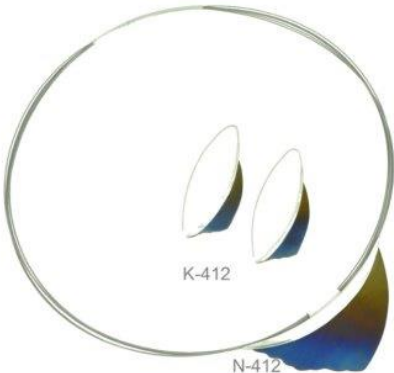
N-411A



N-411



N-411B



K-412

N-412



K-415



N-415







K-416

N-416



K-416

N-416



K-416

N-416





K-418

N-418



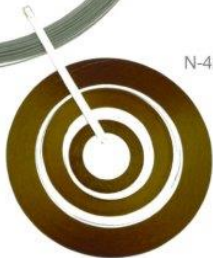
K-418

N-418





K-422



N-422





N-424



K-426AP

N-426AP



K-426C

N-426C



K-426 CA

N-426 CA



K-426L

N-426 L



K-426L

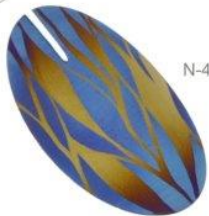
N-426L



K-428



N-428



N-429





K-429

N-429

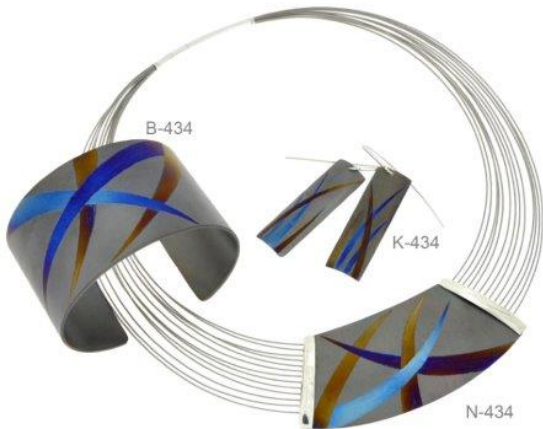


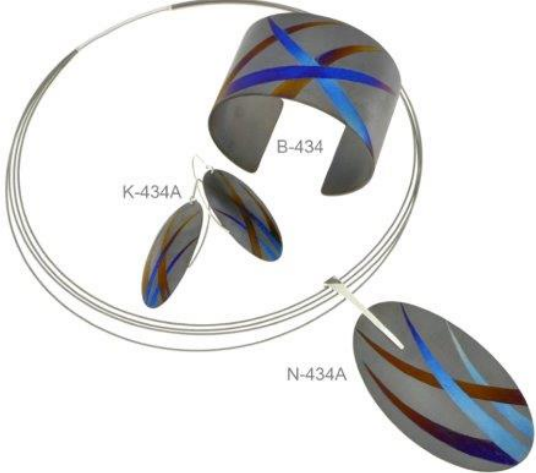


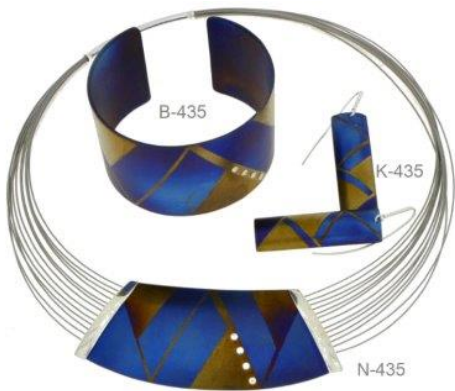
B-433

K-433

N-433A









B-436

N-436



B-437

N-437





B-438

K-438

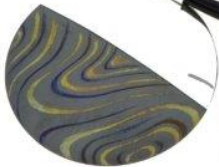
N-438

N-439



K-439

N-441



K-441



P443

K-443



N-443A

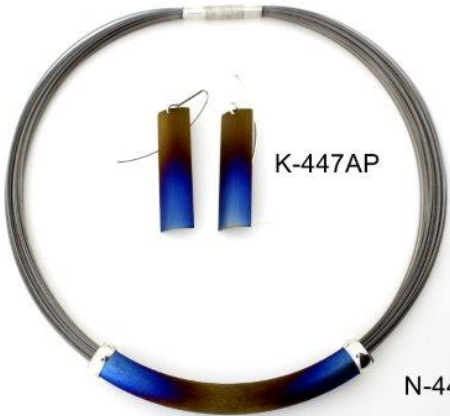
N-443



N-444



N-447



K-447AP

N-447AP







N-453



K-453



N-453A



K-453A



N-454



K-454



N-454A



K-454A





K-454AP

N-454AP



K-454APA

N-454APA



N-455



K-456

N-456



N-457



K-457



N-457



K-457

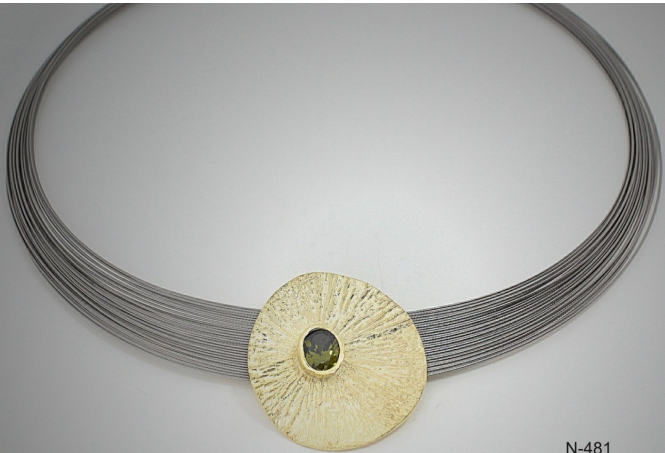


N-478A





N-478C



N-481



N-481A



N-481B



N-482



N-482A



N-482B



N-489





N-489A



N-489B



N-K1



N-K1A



N-K2



N-K3



N-K3A



N-K4





N-K4A



N-K5



N-K5A



N-K5B



N-K6



N-K6A



N-K7



N-K7A





N-K8



N-K8A



N-K9



N-K9



york

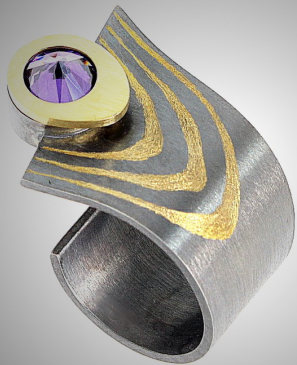


york 1

K-442



N-442



P-479





P-479A



P-479B



P-479C



P-480



P-480A



P-480B



P-480C



P-481





P-481A



P-481B



P-482



P-482A



P-482B



P-483



P-483A



P-484





P-484A

P-484B





P-485



P-486

P-486A





P-486B



P-486C

P-487







P-487A



P-487B



P-488



P-489



P-489A



P-489B



P-490



P-491





P-491A



P-491B



P-493



P-493A



P-493B



P-493C



P-494



P-494A





P-494B



P-495



P-496



P-496A



P-496B



P-497



P-497A



P-498





P-498A



P-498AA



P-498AB



P-498AC



P-499



P-499A



P-499B



P-500





P-500A



P-500B



P-501



P-501A



P-501B



P-502



P-502A



P-502B





P-503



P-503A



P-504



P-504A



P-505



P-505A



P-506



K-478





K-481



K-481A



K-481B



K-483



K-483A



K-484



K-484A

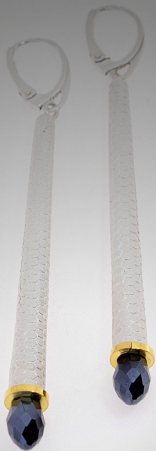


K-498





K-498A



K-498B



K-507



K-507A



K-507B





Z-475A



K-475A